

*“You saw how
the **LORD**
your **God** carried you,
as a father carries his son,
all the way you went
until you reached
this place”*

Deuteronomy 7:21



WHO WE

A CHRIST-LED, SPIRIT-POWERED, GRACE-MOTIVATED FAMILY OF BELIEVERS

REACH UP

Building authentic relationships with the **Father**, the **Son**, and the **Spirit** through worship, the **Word**, prayer, and holy living.



REACH:

ARE

REACH IN



Building authentic relationships with each other through **Life Groups, fellowship, hospitality, mentoring, and raising up** the next generation of disciples.

REACH OUT

Building authentic relationships with a hurting world through meaningful service, effective witness, and **Christ-like influence**.



A Message From the Heart

Otter Creek reaches me by accepting my love and loving me in return. It has been my joy to love on the kids of this congregation for the past several years, and I have been blessed in return by the welcoming arms of their families. Now, with children of our own, Michelle and I can truly say that Otter Creek has just become an extension of our family. The relationships we are building with other couples and families here through Life Groups, the children's ministry, youth group...they are meaningful beyond words.

- JAMON MARTIN

A PAST THAT REACHED FOR US

Our **Otter Creek** forefathers believed that **God** was at work in them... and had work for them to do. On faith, they reached out to start a new church. Later, they reached out in faith to invest \$40,000 (sixteen times their annual budget!) to build our current building. And we've been reaching out ever since. **A few examples:**

WE HAVE TAKEN THE GOOD NEWS OF GOD'S LOVE ALL OVER THE GLOBE

THE PAST

REACH: AROUND THE WORLD

Korea - In the 1960s and 70s, we spearheaded an effort with about 100 congregations to preach the gospel, found congregations, and establish a *Christian University in Korea*.

Central America - In the 1980s, Steve Sherman led us to share the Gospel and medical missions with people throughout Central America.

Africa - In the 1990s, Charles and Darlene Colston stole our hearts with pictures of children living on the streets of Nairobi and signed us on as partners in their *Made In The Streets* ministry.



REACH: FAMILIES & CHILDREN

Kindergarten & Nursery School - In 1960, under the visionary direction of Ruth Rucker, *Otter Creek* began a preschool/kindergarten program that now reaches 150 children each year.

AGAPE - In the 1960s, Charlie Brandon and Howard Justiss (among others at *Otter Creek*) started an adoption ministry that now reaches across the country to offer comprehensive family and marriage services.



Wayne Reed Center - In 1997, Wayne Reed, Sandra Collins, Marlene Butler, and Bill Lassiter (along with many others) reached out to inner-city families with quality day care through the *Wayne Reed Christian Child-Care Center*.

REACH: THE HOMELESS

Room-in-the-Inn - Deby Samuels Brannon led us into *Room-in-the-Inn*, an opportunity to reach homeless men by giving them hot meals, warm friendship and a safe place to sleep on cold winter nights.

A Message From the Heart



The names of **Bud and Bernie Arnold** immediately cause a sense of joy and warmth in the members of *Otter Creek*. Bud was a visionary. He was a shepherd who led his friends, brothers, and sisters through times of change and times of hardship. Many will tell you that Bud and Bernie were, at times, the one constant that held *Otter Creek* together. When I came on staff and significant changes occurred in the music ministry, Bud embraced me. He was my biggest cheerleader. He and Bernie adopted me like they have so many others. When we lost Bud, it was like losing a father. Bernie's example of light and joy still remains. She and Bud are spiritual heroes to us all. They are timeless in their zeal for Jesus!

- **BRANDON SCOTT THOMAS**
Worship Minister

WHERE WE STAND

We stand now between an honored past and a promising future, between giants who have gone before and giants yet to come. As always, the future lies just beyond our sight.



THERE ARE, HOWEVER, A FEW THINGS WE CAN KNOW WITH CERTAINTY:

- We are at reached our limit — for growth and resources and reach — at our current location.
- Our mission is godly and continuing — to reach up, reach in, and reach out.
- The needs of our city and our world continue to grow at a rapid pace.
- God has used the past sacrifices of Otter Creek members to accomplish significant kingdom business.
- What God has done in our past and is doing in our present, he will do in our future.



A Message From the Heart



On the average, there are 60 to 80 cars that are forced to park in unpaved areas on Sunday mornings, rain or shine. Another 20 or so park at the Purple Cow. While this may seem like a minor inconvenience to some, there is a real concern that guests or visitors to Otter Creek may not find parking spaces and leave or decide not to return. Even in Biblical times solutions had to be found for problems with accommodating crowds! For that reason, the Parking Ministry is targeted at those who might not have ever been to Otter Creek, or any church, for that matter. If it is so difficult for people to simply park their cars, we may completely miss the opportunity to reach them and introduce them to Jesus.

KEVIN COLVETT

A FUTURE FOR US TO REACH: **REACH**

- EXPANDING OUR REACH TO *CHILDREN AND TEENS*
- ENLARGING OUR REACH INTO THE *COMMUNITY*
- INCREASING OUR REACH TO *FAMILIES*
- EXTENDING OUR REACH IN *FOREIGN MISSIONS*
- WIDENING OUR REACH TO *SEEKERS*
- ENHANCING OUR REACH TO *THE HOMELESS*
- IMPROVING OUR REACH TO *FRIENDS AND NEIGHBORS*
- PROMOTING OUR REACH TO *COLLEGE STUDENTS AND SINGLES*
- FOSTERING OUR REACH TO *OTHER CHURCHES AND CHRISTIANS*
- MAXIMIZING THE REACH OF ALL OUR *MINISTRIES*



SPACE FOR OUR IMMEDIATE NEEDS

Our new building has been designed with multi-functional spaces in mind with emphasis on common areas for fellowship.

- 60,000 square feet of space — double our current facility
- 1,000 seat multi-functional auditorium — we currently seat 600
- Approximately 450 parking spaces — we currently have 198
- Common areas for fellowship that are multi-functional
- Expanding adult and children's education space

ROOM TO GROW

Our master plan allows for future expansion up to total of 200,000 square feet to enable our facilities to grow as God gives us increase.

OUR NEW BUILDING WILL BE DESIGNED TO MEET OUR NEEDS FOR YEARS TO COME.

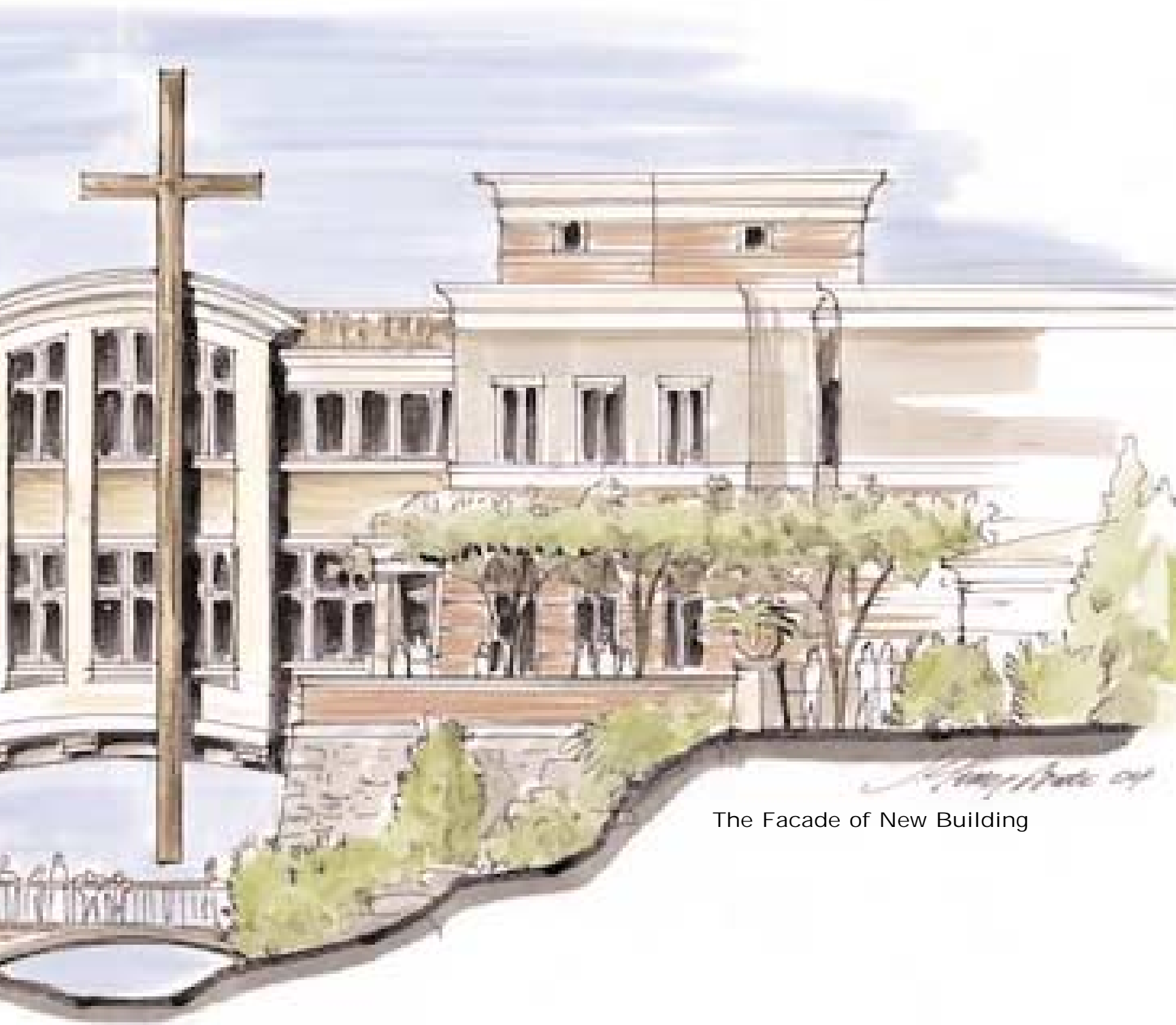
THE FUTURE

REACH:



The Kindergarten Facade





The Facade of New Building

MESSAGE FROM THE LAND/BUILD COMMITTEE:

It has been our privilege to serve **Otter Creek** at this pivotal moment by securing suitable land and planning for a new facility. See the details of this project on the next page. Please come to us with any questions. We are excited about what lies ahead for **Otter Creek** and would enjoy talking about it with you.

-BECKY COWART AND KERRY PATTERSON



PICTURE LEFT TO RIGHT: Phil Gibbs, Becky Cowart, Doug Sanders, John Mott, Lee Ann Rice and Bob Brannon
Not pictured: Cynthia Dotson and Kerry Patterson

THEY ENTERED INTO A COVENANT
TO SEEK THE LORD, THE GOD OF
THEIR FATHERS, WITH ALL THEIR
HEART AND SOUL.

2 CHRONICLES 15:12

A Message From the Heart



We have dreams. . .

. . . of an inviting room with real beds so that our Room in the Inn guests will not have to sleep on the floor. We dream of a bathroom with three or four showers so that our guests will not have to wake in the middle of the night to have their turn bathing. We dream of a facility that is warm, functional and cheerful so that we can extend hospitality to our guests in an atmosphere of love and fellowship. We dream of a time when we can open our arms and reach out to more than twelve men...and maybe even women, children and families.

- MATT AND EMILY LITTLE
Room in The Inn

PROJECT SUMMARY

How much land are we buying & what is it going to cost?

Acres purchased for building	25	Originally we had 20.5A but, with contract assignment, we feel 25A is a much better parcel for current and future growth
Cost per acre	\$150,000	With the sale of the balance of 47.5A, we expect to reach this target cost per acre
Total land cost	\$3,750,000	
Building square footage	60,000	Our current buildings cover 31,000 square feet.
Auditorium Seating capacity	1,000	Current seating capacity is 600
Construction, furnishings, fees and contingencies	\$11,000,000	Based on current plans, our general contractor is estimating this number to be reasonable
TOTAL COST OF LAND & BUILDING	\$15,000,000	

Where does the money come from to pay for it?

Sale of current property	\$3,300,000	Current value according to a recent appraisal
Capital Campaign	\$5,000,000	Capital campaign goal
Operating reserves (cumulative for next 3 years)	\$1,000,000	Even with reserve target, we will budget 4% yearly growth in ministries
Bank financing at time of move in	\$5,700,000	Balance needed to fund the project

When will we move in?

Construction projected to begin	early in 2006	Construction may begin sooner based on fund raising.
Move in	early in 2007	

LINKING MINISTRIES AND MORTAR

I look forward to a place where we can be family...with room to worship together, room to talk and eat and meet, places for our children to grow and learn, the capacity to add new members to our spiritual family...a place that allows the godly DNA of Otter Creek to be passed along to the future.



- **TIM WOODROOF**
Senior Minister



Prayer, the Word, and Spiritual Direction are the foundational, though often hidden, aspects of ministry. Of course, these can take place anywhere — at home, under a tree, or in the marketplace. However, a new facility could enhance these, providing a sacred space where guests and members alike could hear the

Spirit of Christ more clearly. Small rooms for meaningful dialogue and prayer, quiet places for mediation, classrooms that are conducive to learning — even walls, and doors, and grand halls have the potential of stilling our restless souls and opening our deaf ears to the love of God and his call to go into the world and love people.

- **SCOTT OWINGS**
Adult Education

There are a host of things that the new building will assist! There are countless ways that we suffer because of our limited facilities. I get so excited about the possibility of having a



Teen Center that would facilitate worship and the study of God's word! I can't wait to have a facility with a ceiling higher than 9 or 10 feet so that we can do some things that many other youth groups in America take for granted! And what an incredible thing it will be to have a facility

that all of our teens can fit in at once...not to mention their friends... and our Youth Leaders!!!!

- **DAVID RUBIO**,
Youth Ministry



Kingdom thinking opens the door for God to raise up more of our own members to be sent into the mission field and encourages those who stay behind to become grateful senders and supporters. As we open our doors wider to our community, we will, in turn, be able to open our doors wider to our world.

- **STEVE SHERMAN**,
Missions

It's exciting to envision a place for our children to call their own that has room to reach kids through many different avenues – music, games, drama and play. I also picture a place with room for parents to say something besides, "Excuse me," to the people waiting next to them picking up their children. But one of the most important things a new space will provide is a secure environment for our ever-growing number of precious babies.



- **JANET CROTHERS**,
Children's Ministry



So many opportunities will be possible with a new facility—wonderful ministries that reach out to the music and art communities; major musical productions with lights, sound and sets; coffee shop evenings and acoustic jam nights. I look forward to a place where faith-based art is valued and where there is space to display it; where there is room to rehearse music and drama adequately. Above all, it will be place of passion for God, for the community, and for those who are wandering.

- **BRANDON SCOTT THOMAS**,
Worship Ministry

We have wonderful, godly women who teach the children enrolled in our Kindergarten and pre-school. What a blessing it will be to have classrooms that make it easier for them to teach and more fun for our children to learn.



- **PAT WARD**,
Otter Creek Kindergarten

FROM THE ELDERS

STEVE ADAMS

We have humbly asked **God** for His direction. Now we are confident He has revealed his answer. **God** has always given the **Otter Creek** congregation difficult tasks to accomplish.

GEORGE BUCK

As we begin this campaign and journey to a new location, I am reminded of the charge **God** gave Joshua, "Have I not commanded you? Be strong and courageous. Do not be terrified; do not be discouraged, for the **LORD** your **God** will be with you wherever you go."

JIM BUTLER

I trust that **God** will use our new building to expand His kingdom as He has used our current building over the last 54 years. I am excited about the ministries of the future.

FRED EWING

This effort has my total and complete support. Unconstrained by a facility designed for a congregation half our size, the **Otter Creek** church will bring its unique gifts, love, and values to touch more people for God's purposes than we are able to now.

JERRY FRANKLIN

I am excited about a future where we can provide facilities for our young families at **Otter Creek**. I look forward to being able to expand our ministries – both domestic and foreign – things that we can only do by having a physical plant that supports these efforts.

TERRY FRISBY

The **Otter Creek Church** has provided a wonderful place for my family to grow for 23 years. My excitement about the future comes from the chance to share with other families what we have discovered here.

STEVE GIDDENS

Our world badly needs the experience of community we have found with each other. I am convicted that at this critical time in world and **Otter Creek** history, we are being led by the Spirit to create the physical space needed to do **His** will.

BILL RIEDER

God is faithful. Over the last seven years, we have bathed this process with many individual and collective hours of prayer. Doors have closed and doors have opened. I firmly believe we are where we are because we continue to lay before **God** our plans and ask **Him** to shape us into the church He wants us to be where He wants us to be.

ED RUCKER

I believe that **God** has called us to this task so that He can know our heart for **Him**. He also wants us to know that we cannot do this by our own might and strength, but only by **His**.

FLETCHER SRYGLEY

I love **Otter Creek**. I love the Christians who welcomed us in 1973 and helped us raise our family. And I love those of you who came to **Otter Creek** since then.

WAYNE TOMLINSON

For over twenty years, my family has been blessed because people in **Otter Creek** have challenged us, encouraged us, and cared for us.

LELAND VICKERS

Jackie and I are glad to be at **Otter Creek**. We see how **God**, by his **Spirit**, is working through the people and ministries of this church. The ministry opportunities that will be available to us from a new location are much, much larger than 20+ acres of land and much, much bigger than simply more space for worship and fellowship.



PICTURE LEFT TO RIGHT FIRST ROW: Jim Butler, Steve Giddens, Jerry Franklin, Wayne Tomlinson, Terry Frisby, Steve Adams
BACK ROW: Ed Rucker, Bill Rieder, Leland Vickers, Fred Ewing, Fletcher Srygley, George Buck

MY PART

- PRAY—** Work through the **40-Day Devotional Guide** with us. Spend time every day reading the **Bible**, seeking **God's** will, and meditating on his promises.
- STAY INFORMED—** Check out the web site www.ocreach.com. Read the **FAQs**. Listen for announcements.
- ENCOURAGE—** **Involve** others (family, friends) in your decision. Your willingness to “**reach**” will encourage them. Their encouragement to “**reach**” will challenge you.
- PARTICIPATE—** Get involved in the Campaign. There is no better way to see **God** at work. Few of us can give huge amounts to our **Reach** campaign. But all of us can **participate** at some level. A lot of us, doing what we can, adds up.
- BE CREATIVE—** Think of fresh ways to increase your giving. Hold a yard sale. Auction stuff on **E-bay**. Postpone the new car purchase. Go without lunch twice a week (**over 3 years, that alone amounts to \$3000!**). Keep asking **God** to show you.
- PLAN—** **Don't wait** until the last minute to make up your mind. **Commit to a course** of action (what you will give... how you will give) and then make your plans.
- GIVE—** Give what **God** puts on your heart. Give past your comfort zone. **Give** in trust. **Reach** to give and watch **God** reach back.

*“Lord, I want to please you.
Show me what I should do to make your
dreams for my church come true.”*